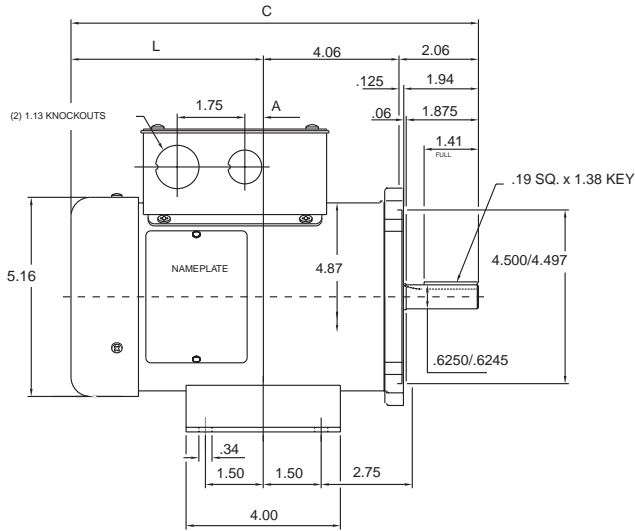


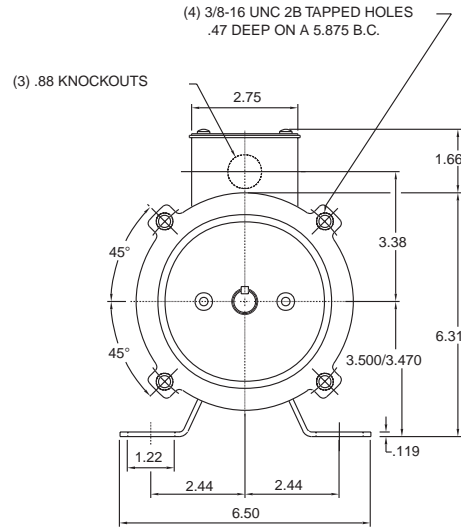
POWERTEC MOTOR DIMENSIONS

F42 Frames, TENV (Totally Enclosed, Non-Ventilated) NEMA 56C Face Mounting

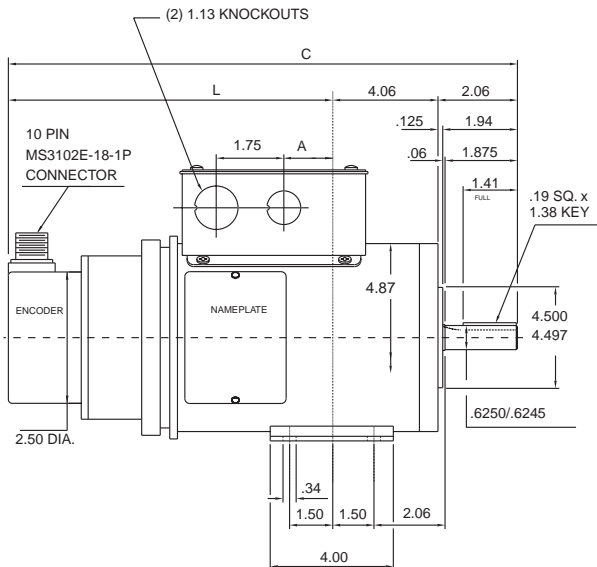
SIDE VIEW (STANDARD)



DRIVE END



SIDE VIEW (SERVO OPTION)



MODEL	C	L	AD
F42B	10.25	4.13	0.43
F42C	12.00	5.88	1.32

NOTES

- 1) MAXIMUM FACE RUNOUT TO BE .004 T.I.R.
- 2) MAXIMUM PILOT ECCENTRICITY TO BE .004 T.I.R.
- 3) PERMISSIBLE SHAFT RUNOUT TO BE .002 T.I.R.
- 4) TOTALLY ENCLOSED MOTOR - GASKETS THROUGHOUT.